

TREATMENT PLANT APPROVAL 01/2021

Plumbing and Drainage Act 2018

Approval

1. The **Rivatec RWT 10-2 (10EP/1500L)** ("the system") described in the Specifications and Drawings in the attached Schedule and manufactured by **Rivatec Environmental Pty Ltd** (ABN 19 099 003 737) ("the manufacturer") has been assessed in accordance with the Queensland Plumbing and Wastewater Code (QPW Code) dated 26 March 2019.
2. Approval is granted for the advanced secondary quality wastewater treatment system, subject to compliance by the manufacturer with the requirements of the *Plumbing and Drainage Regulation 2018*, and the conditions of approval detailed below.
3. This approval, the conditions of approval and the Schedule comprise the entire Treatment Plant Approval document.
4. Any modification by the manufacturer to the design, drawings or specifications scheduled to this approval must be approved by the Chief Executive.

Conditions of approval

5. The manufacture, installation, operation, service and maintenance of the systems must be in conformity with the conditions of this Treatment Plant Approval.
6. The system when tested by a certification accreditation body in accordance with AS1546.3:2017 was found to comply with the advanced secondary 10EP/1500L level without nutrient reduction effluent criteria and must continue to meet the following requirements:

TABLE 2.1 (AS1546.3:2017)
EFFLUENT COMPLIANCE CRITERIA
FOR AN STS WITH NO NUTRIENT
REDUCTION FACILITIES

Parameter	Secondary effluent		Advanced secondary effluent	
	90% of samples	Maximum	90% of samples	Maximum
BOD ₅	≤20 mg/L	30 mg/L	≤10 mg/L	20 mg/L
TSS	≤30 mg/L	45 mg/L	≤10 mg/L	20 mg/L
<i>E. coli</i> *	≤10 cfu/100 mL	30 cfu/100 mL	≤10 cfu/100 mL	30 cfu/100 mL
FAC	Minimum 0.5 mg/L†	N/A	Minimum 0.5 mg/L†	N/A
Turbidity	N/A	N/A	N/A	5 NTU

* Where disinfection is required.

† Minimum level, not 90% of samples.

Treatment Plant Approval

Approved by: Lindsay Walker

Delegated Authority

Department of Housing & Public Works

7. Each system must be serviced in accordance with the accreditation certificate issued by Global Certification Pty Ltd on 6 May 2020, and details supplied in the owner's operation and maintenance manual.
8. Each system must be supplied with —
 - (a) a copy of this Treatment Plant Approval document;
 - (b) details of the system;
 - (c) instructions for authorised persons for its installation;
 - (d) a copy of the owner's manual to be given to the owner at the time of installation; and
 - (e) detailed instructions for authorised service personal for its operation and maintenance.
9. At each anniversary of the Treatment Plant Approval date, the supplier must submit to the Chief Executive a list of all systems installed in Queensland during the previous 12 months. Where the Chief Executive is notified of any system failures the Chief Executive may randomly select a number of installed systems for audit. The Chief Executive will notify the supplier's nominated NATA accredited laboratory which systems are to be audited for BOD⁵ and TSS. The sampling and testing of the selected systems, if required, is to be done at the supplier's expense. The following results must be reported to the Chief Executive;
 - (a) Address of premises;
 - (b) Date inspected and sampled;
 - (c) Sample identification number;
 - (d) BOD⁵ for influent and effluent; and
 - (e) TSS for influent and effluent.
10. The Chief Executive may, by written notice, cancel this approval if the manufacturer/supplier fails —
 - (a) to comply with one or more of the conditions of approval; or
 - (b) within 30 days, to remedy a breach, for which a written notice been given by the Chief Executive.
11. This approval may only be assigned with the prior written consent of the Chief Executive.
12. This approval expires on 27 January 2026 unless cancelled earlier in accordance with paragraph 10 above.

Lindsay Walker

Director
Plumbing, Drainage and Special Projects
Building Legislation and Policy

Date approved: 28 January 2020

Level 7,
63 George Street Brisbane
GPO Box 2457, Brisbane Qld 4001

Telephone +61 7 3008 2557
Facsimile +61 7 3237 1248

Website www.hpw.qld.gov.au

ABN 61 331 950 314

Treatment Plant Approval

Approved by: Lindsay Walker

Delegated Authority

Department of Housing & Public Works

TREATMENT PLANT APPROVAL No. 01/2021
Plumbing and Drainage Act 2018

SCHEDULE

Attachment 1

Drawings and Specifications for the

Rivatec RWT 10-2 (10EP/1500L)

Treatment Plant Approval

Approved by: Lindsay Walker

Delegated Authority

Department of Housing & Public Works

PRODUCT CERTIFICATE OF REGISTRATION



Global Certification Pty Ltd

Number 564

Product Performance Testing

AS 1546.3:2017

Advanced Secondary 10EP Level

Issued to

Rivatec Environmental Pty Ltd

6 Marklea Close, Tuggerah, NSW 2259

Certification Date: - 6/05/2020

Expiry Date: - 5/05/2025

Product Certified:

Model	Disinfection	Average Results over the Test Period	Servicing Frequency	Discharge	Manufactured and assembled
Rivatec RWT10-2	Yes	TSS 7.18 mg/l BOD ₅ <2 mg/l Total Nitrogen 31.62 mg/l Phosphorus 11.61 mg/l Turbidity 10.22 NTU E coli <1CFU/100ml	3 Monthly Service 3.2 yearly sedimentation pump out or as required	Pumped via disinfection/pump chamber with chlorine dispenser	Manufactured at 5 Marklea Close Tuggerah, NSW 2258 Assembled: at 6 Marklea Close, Tuggerah, NSW 2259

The system took 4 weeks to meet the advanced secondary standard.

NACE CODES: 3700

This Certificate of Conformance to the Product Certificate Scheme remains the property of Global Certification Pty. Ltd. and is granted subject to the terms and conditions of the Contract Application, in respect of the Product certified on this page and the attached schedule to the Certification of Conformance, bearing the same number as this certificate.

Date of Issue: 6th May 2020

Bruce Smith Director



www.jas-anz.com.au/register

Signed for and on behalf of Global Certification Pty Ltd
PO Box 195, Morayfield QLD 4506

© Global Certification Pty Ltd. GC0508 R4 July 2015

Treatment Plant Approval

Approved by: Lindsay Walker

Delegated Authority

Department of Housing & Public Works



Department of Housing & Public Works

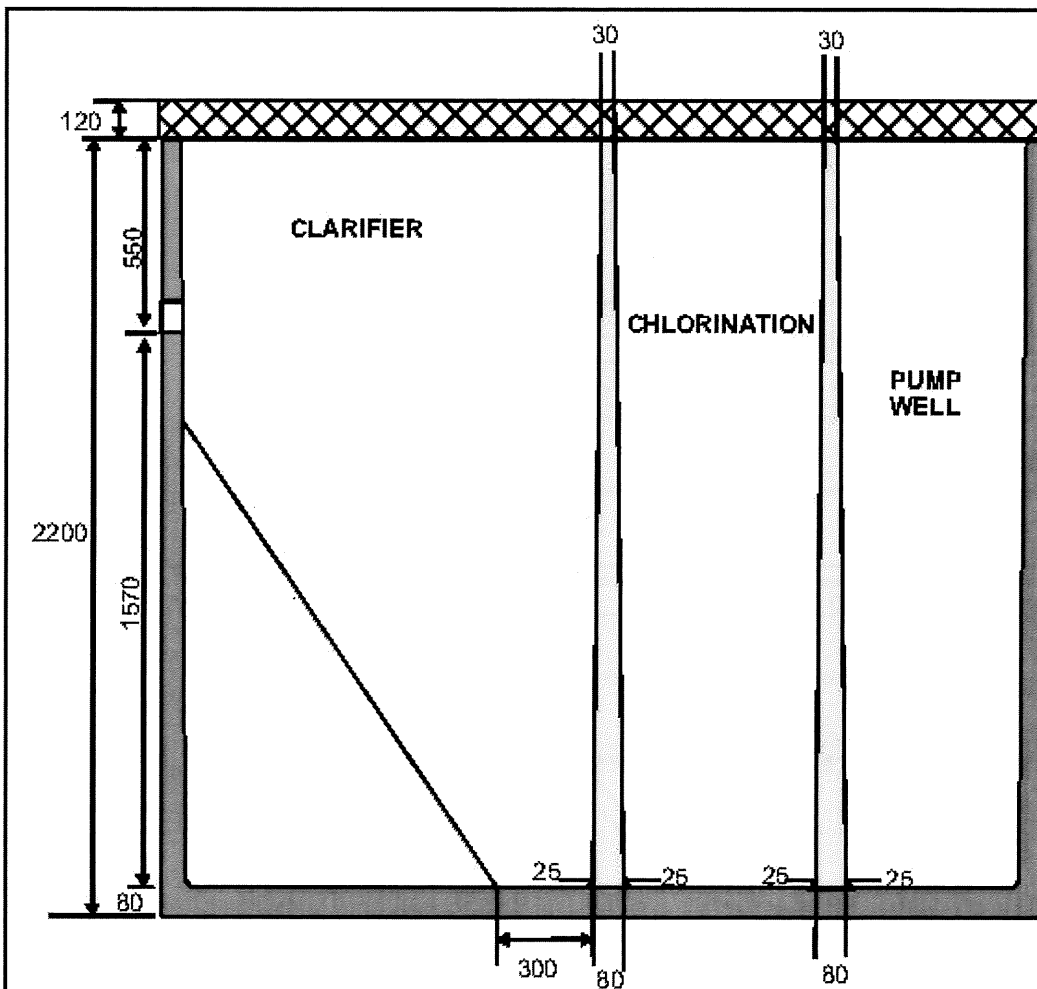
Approved By;

Treatment Plant Approval

Approved by: Lindsay Walker

Delegated Authority

Department of Housing & Public Works



EFFLUENT T
SIDE VIEW;
CHAMBER 5
CHAMBER 6
CHAMBER 7

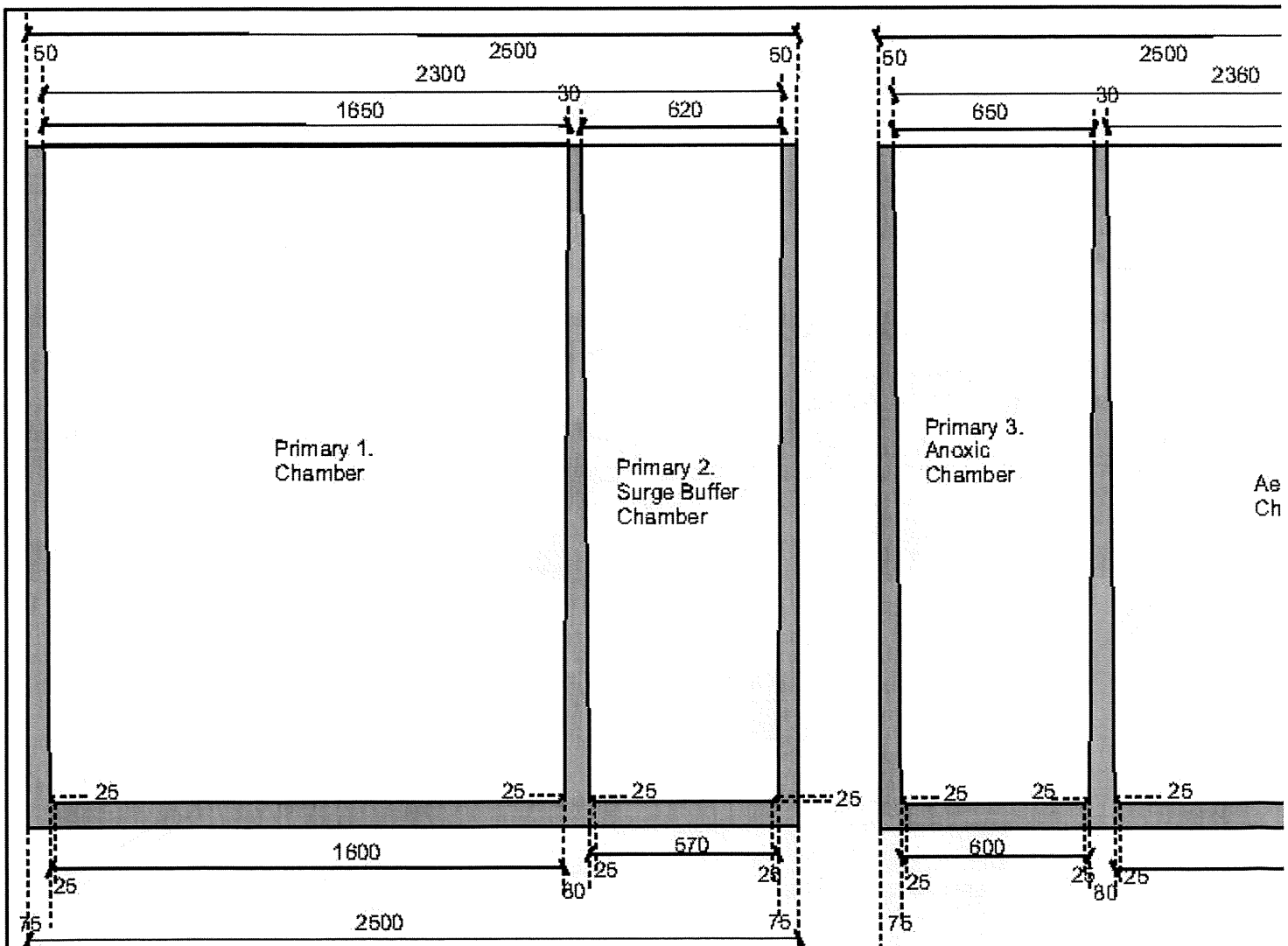
date	revision	by	Draw SF
			Scal N/A
			App

Treatment Plant Approval

Approved by: Lindsay Walker

Delegated Authority

Department of Housing & Public Works



EFFLUENT TREATMENT CHAMBERS
SIDE VIEW;
CHAMBER 1. PRIMARY
CHAMBER 2. PRIMARY BUFFER
CHAMBER 3. PRIMARY ANOXIC
CHAMBER 4. AERATION

date	revision

Treatment Plant Approval

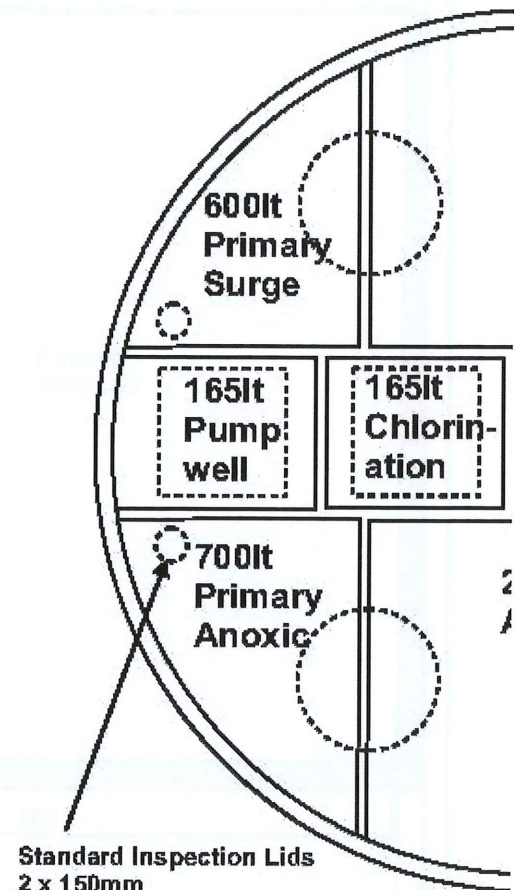
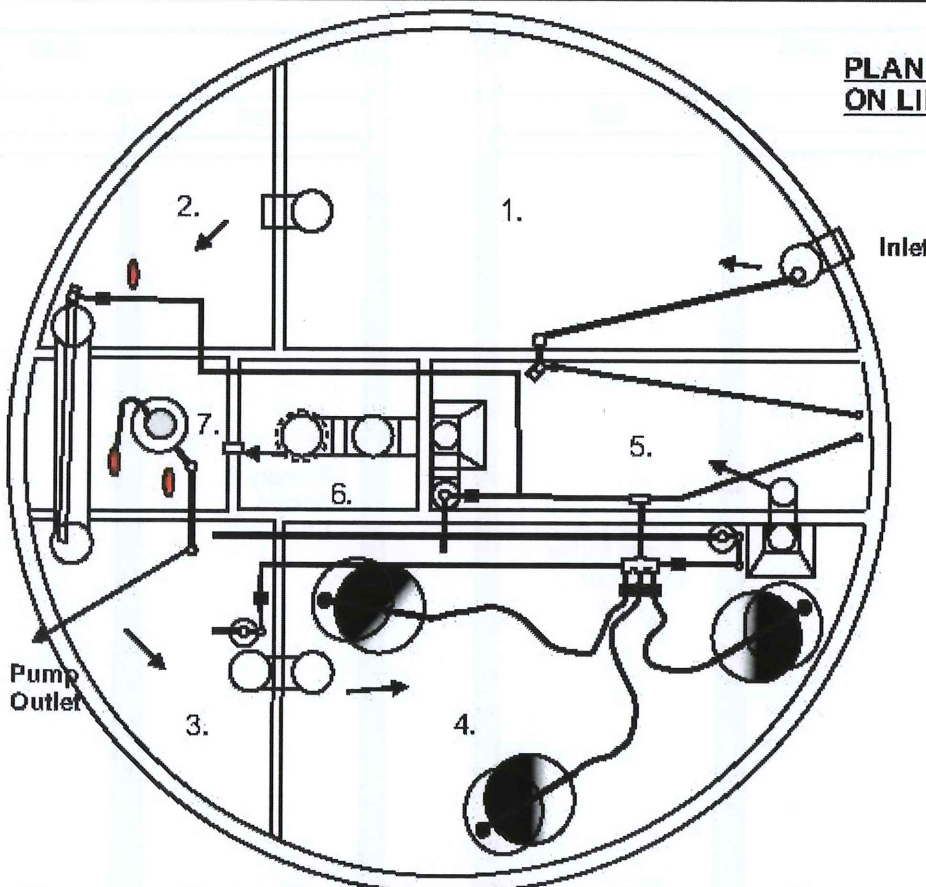
Approved by: Lindsay Walker

Delegated Authority

Department of Housing & Public Works



**PLAN VIEW
ON LID**



**RIVATEC WASTEWATER TREATMENT
SERIAL No / Model ; RWT10 - 2**

**EFFLUENT TREATMENT SYSTEM
MODEL RWT10 - 2
PIPING DETAILS**

Standard Inspection Lids
2 x 150mm

date revision by

Drawn;
SF

Date;
APRIL 2019

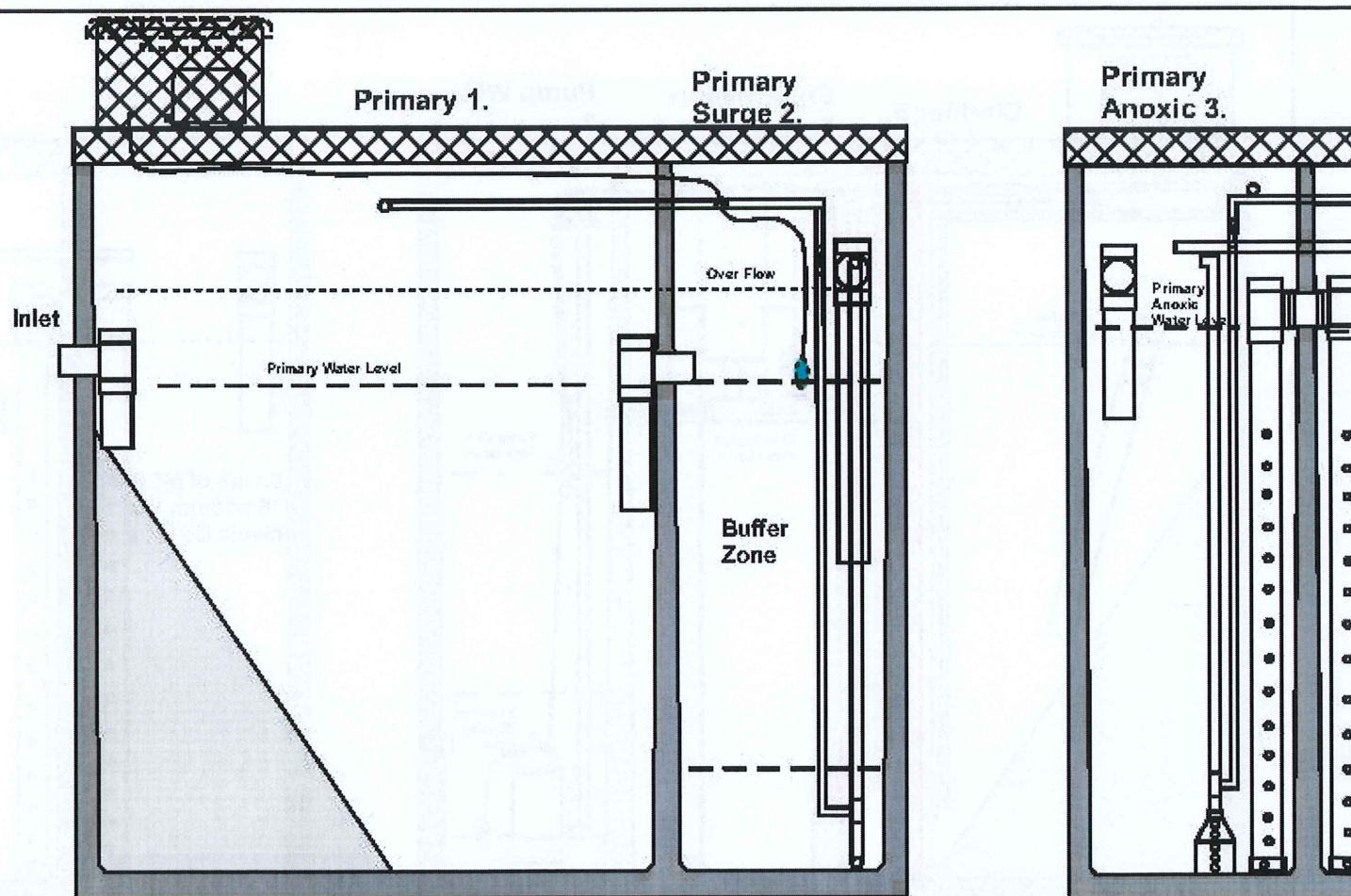
Drg No;

Scale;
N/A

SHEET 4 of 19

Approved By;

Department of Housing & Public Works



SIDE VIEW;
PIPE WORK FOR CHAMBERS
1 - 2 - 3 - 4

date	revision	by

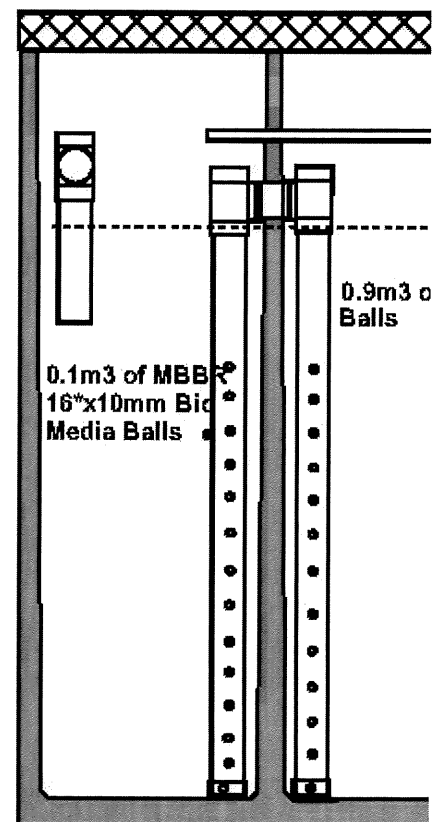
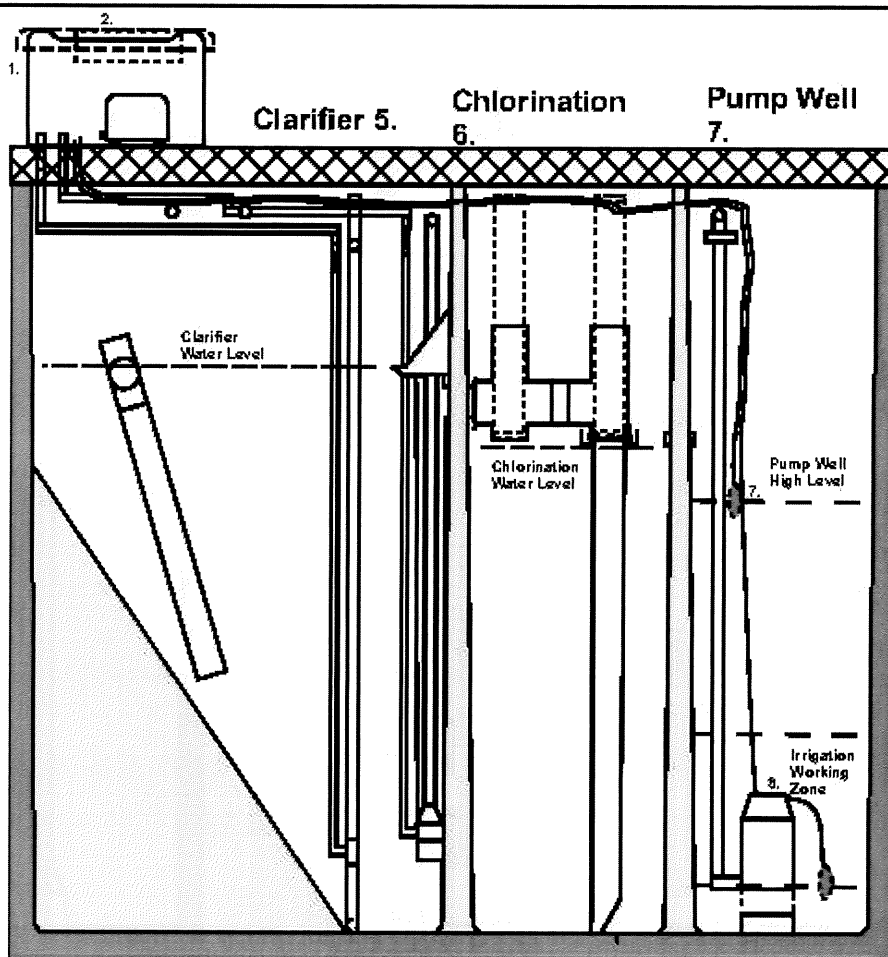
R
 S
 E
 M
 F
 D
 S
 S
 M
 A

Treatment Plant Approval

Approved by: Lindsay Walker

Delegated Authority

Department of Housing & Public Works



**SIDE VIEW;
PIPE WORK FOR CHAMBERS
5 - 6 - 7 AND MBBR BIO MEDIA BALLS**

date	revision	by

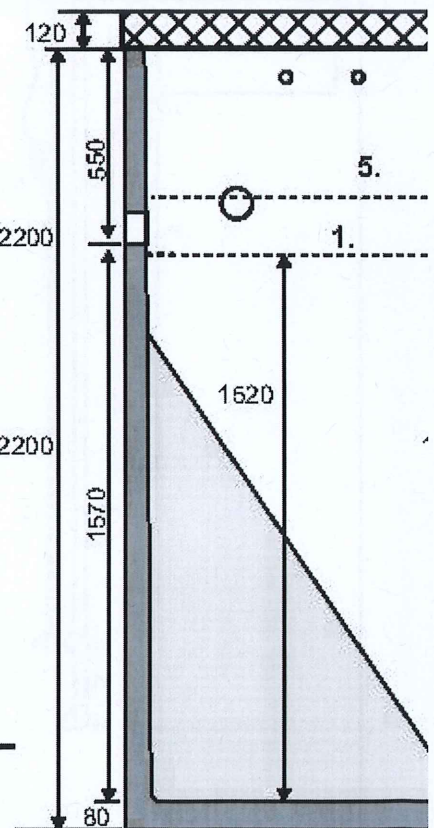
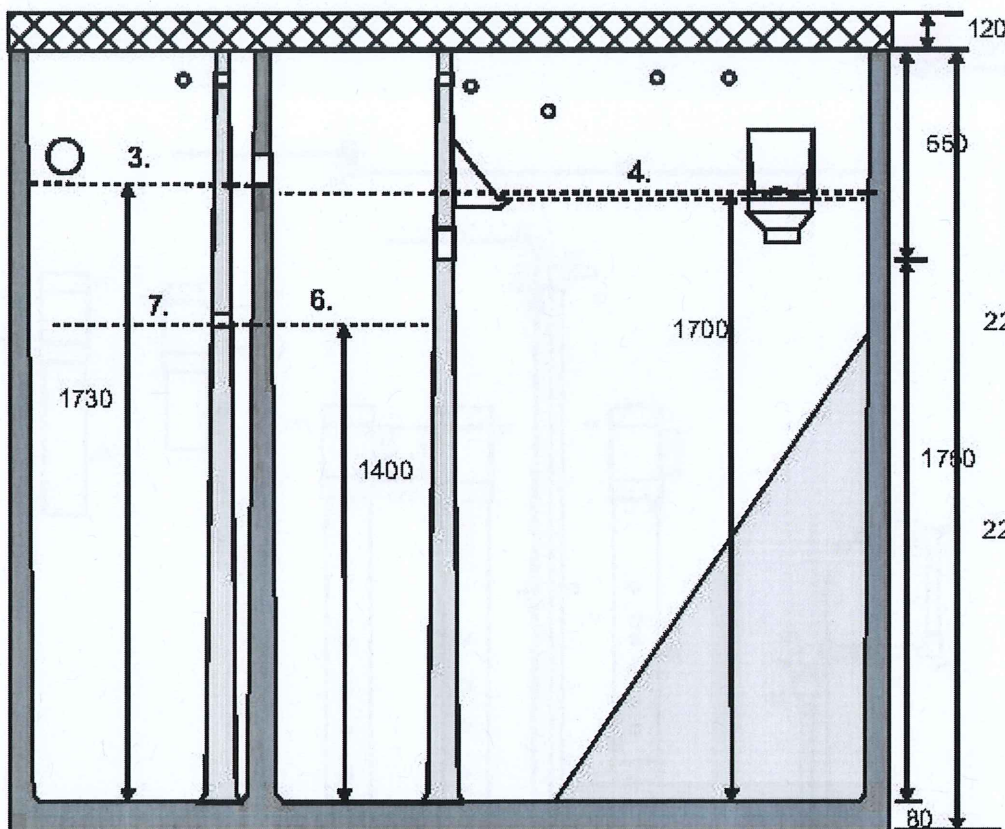
F
S
E
E
F
C
S
A
A

Treatment Plant Approval

Approved by: Lindsay Walker

Delegated Authority

Department of Housing & Public Works



**RIVATEC WASTEWATER TREATMENT
SERIAL No / Model ; RWT10 - 2**

**EFFLUENT TREATMENT SYSTEM
MODEL RWT10 - 2
PIPING DETAILS**

date	revision	by	Drawn; SF	Date; APRIL 2019	Drg No;
			Scale; N/A		SHEET 7 of 19
			Approved By;		

**EFFLUENT
CHAMBER
WATER LEVEL
BASE;**

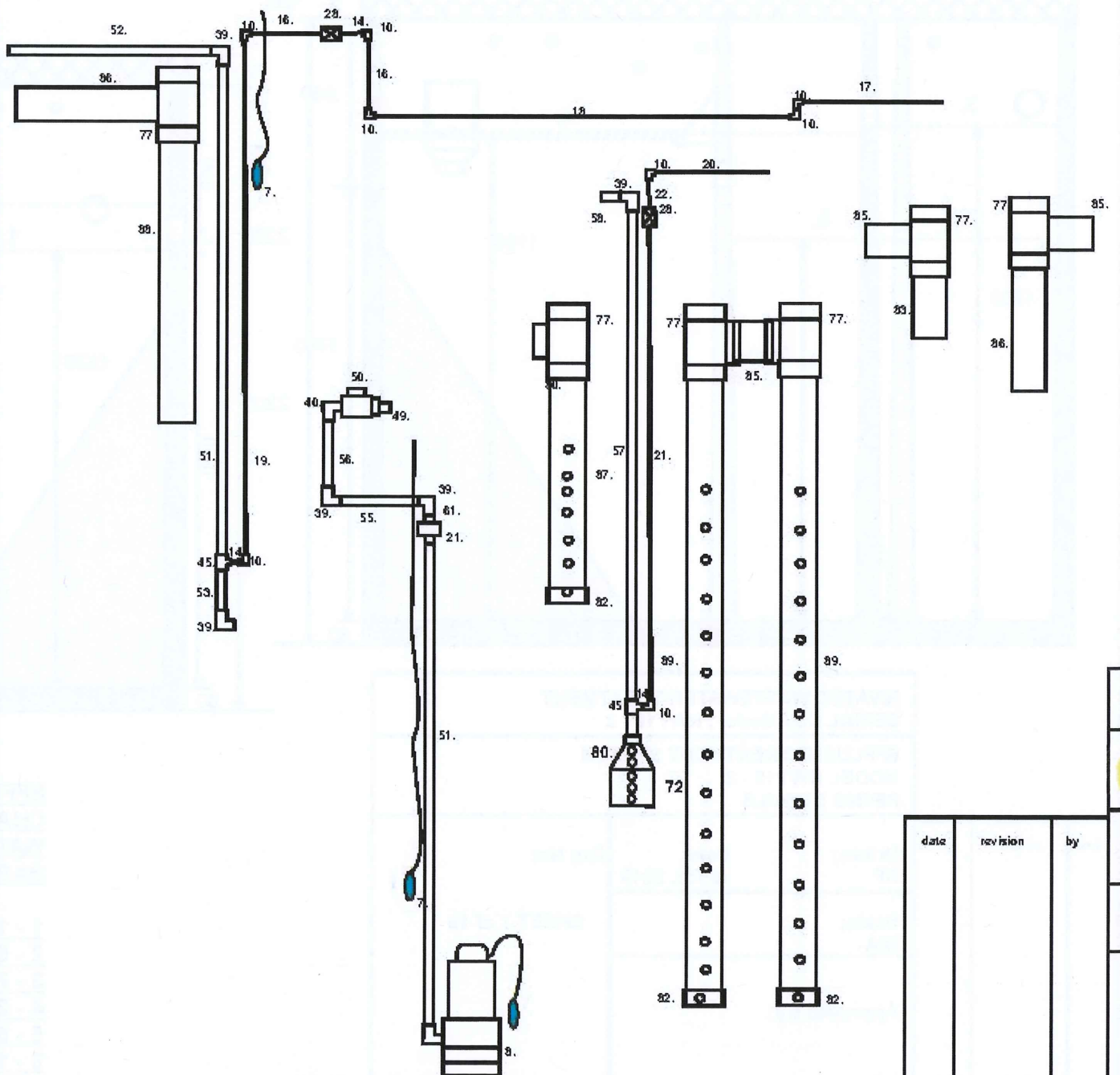
- 1 - 1800lt
- 2 - 600lt
- 3 - 700lt
- 4 - 2650lt
- 5 - 565lt
- 6 - 165lt
- 7 - 165lt

Treatment Plant Approval

Approved by: Lindsay Walker

Delegated Authority

Department of Housing & Public Works



RVA
SERI
EFFL
MOD
PPIN

Draw
SF

Scale
N/A

Appr

date	revision	by

Approved by: Lindsay Walker
Delegated Authority
Department of Housing & Public Works

