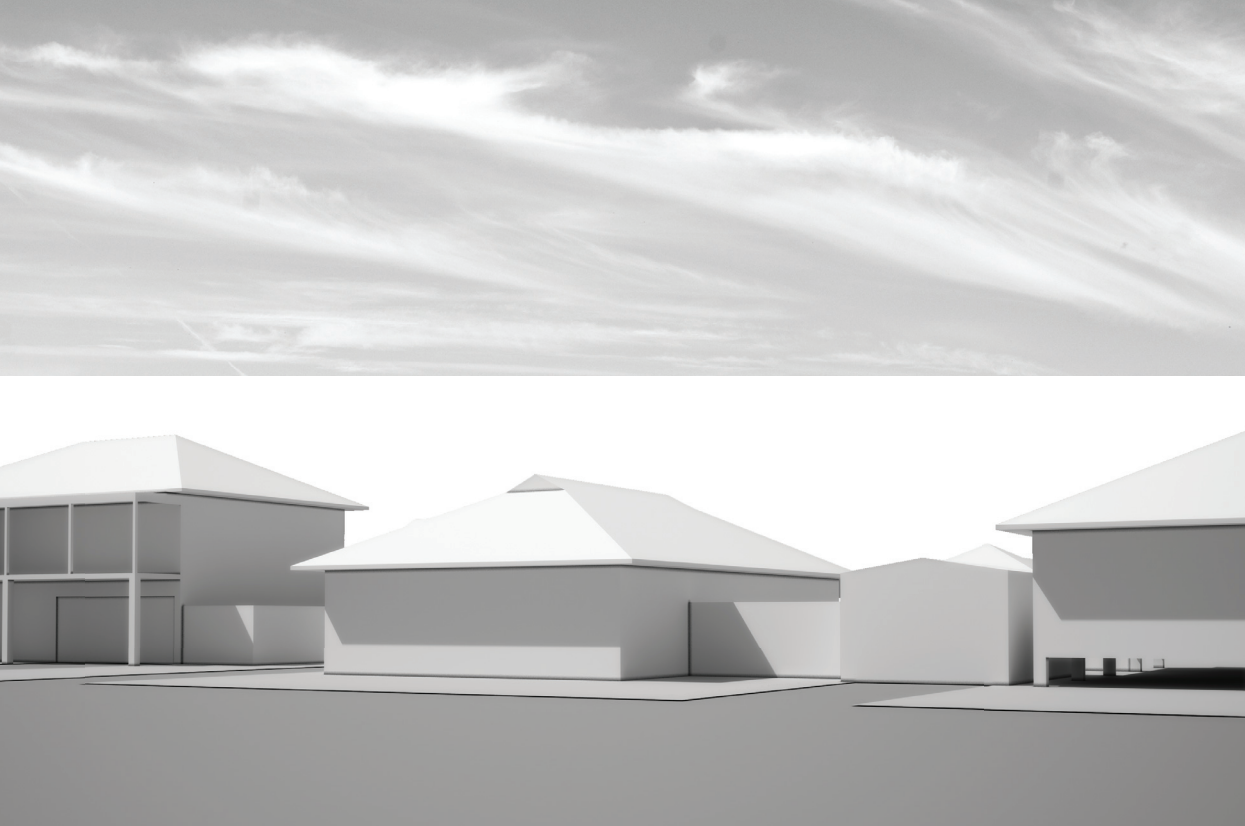


EXISTING PERSPECTIVE



SINGLE DEVELOPMENT PERSPECTIVE



MULTIPLE DEVELOPMENT PERSPECTIVE



DENSITY AND DIVERSITY DONE WELL

LIVE WORK UNITS IN COURTYARD APARTMENT

- Courtyard apartment is trying to keep the same quality of life as living in a house by keeping the connection to sky and providing personal roof gardens. it also helps to keep the facade of city green.
• By providing an attached work space to each unit it makes it more affordable by eliminating the rent of an office and travelling expense in growing areas such as Brisbane
• The attached space to each unit is a flexible space to use as a small office, any art work shop and can be used as an extra bedroom for growing families.
• To get the most possible breeze units are shaped with the less possible width and crossed windows are provided to each space to maximise breathing

GROUND FLOOR

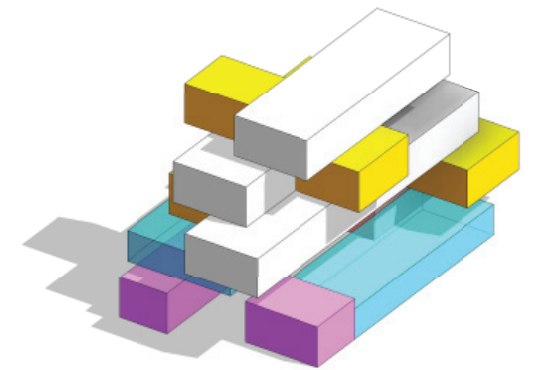
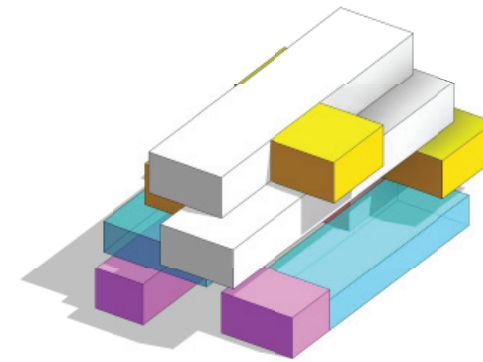
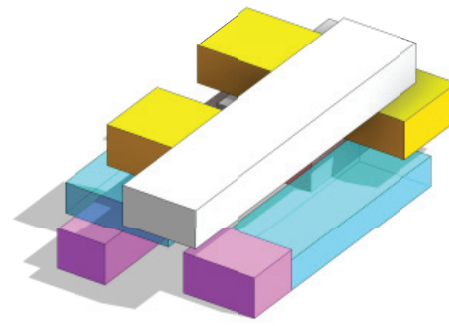
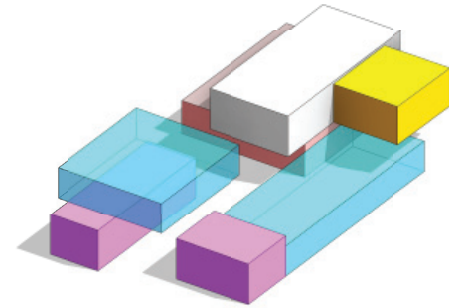
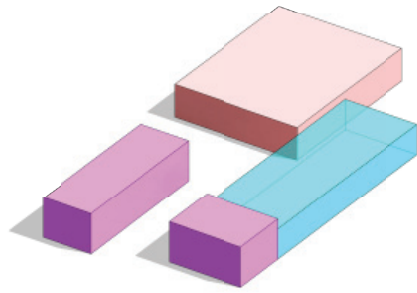
FIRST FLOOR

SECOND FLOOR

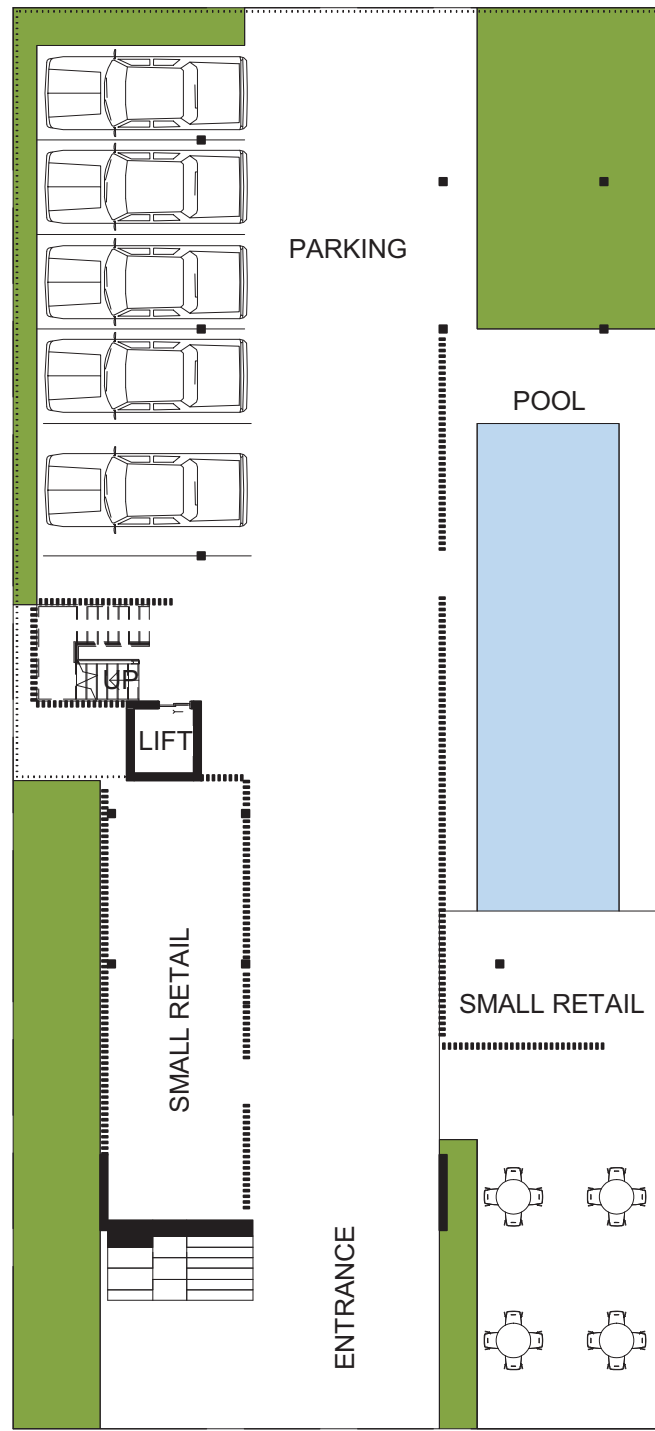
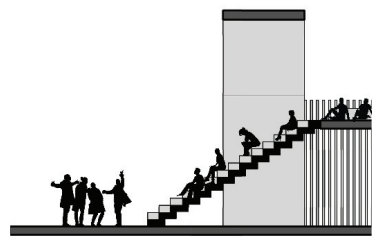
FORTH FLOOR

FIFTH FLOOR

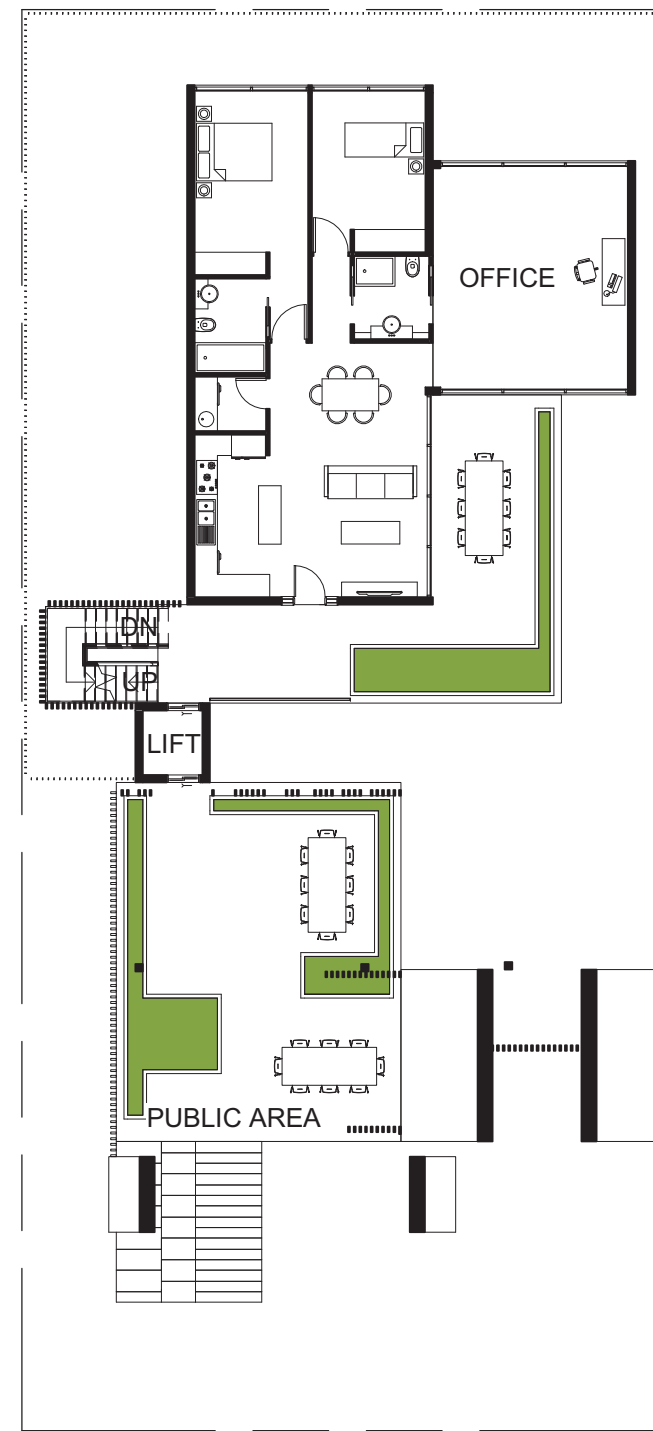
- Detached small business
- Parking
- Pool and public area
- Unit
- Attached home office work space



The wide stairs is not only a connection from public part of the building to the street but also it is a place for different events for different generation. It can be a place for kids to play, for young neighbours it is a place for gathering, it can be used for playing music or any other street art or simply a place for two lovers to sit and talk, or finally for an old man to sit and read his newspaper. It is a flexible place for variety activities.



GROUND FLOOR SC 1/200

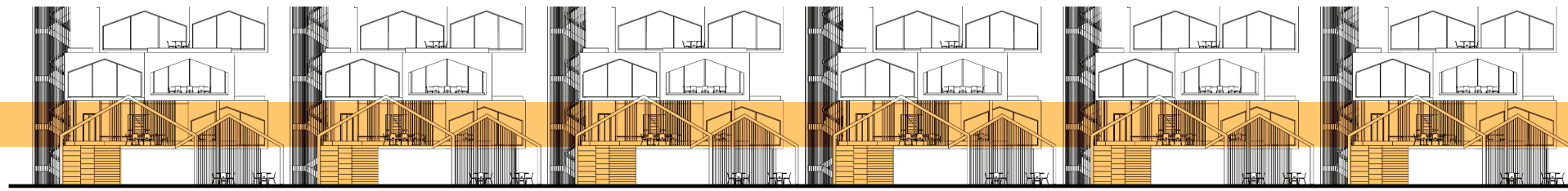
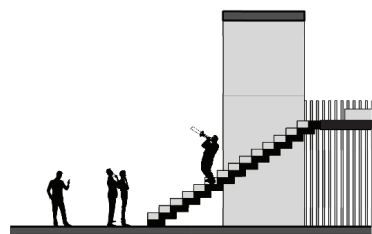


FIRST FLOOR SC 1/200



SECOND FLOOR SC 1/200

DENSITY AND DIVERSITY DONE WELL



GROUND FLOOR

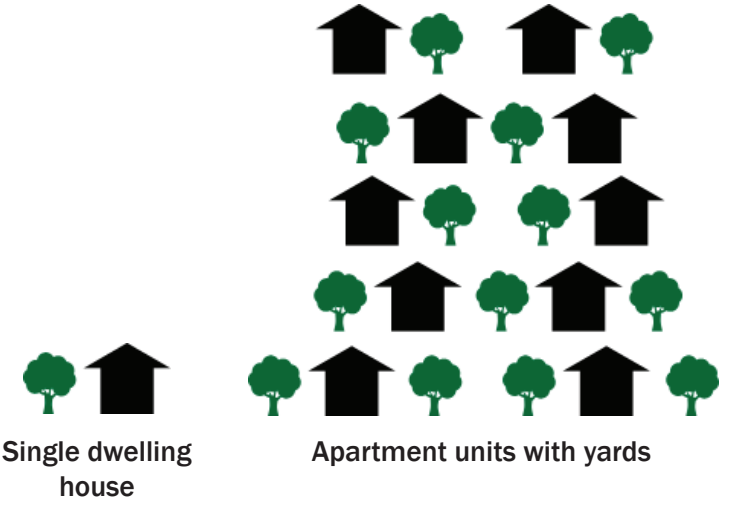
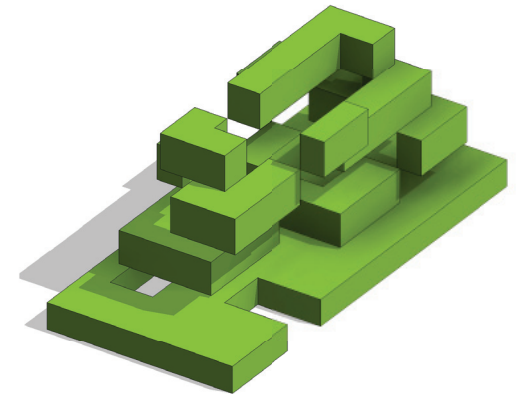
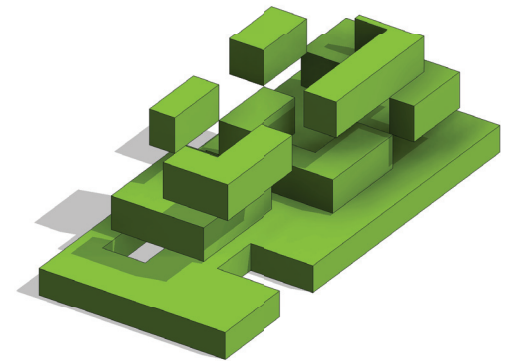
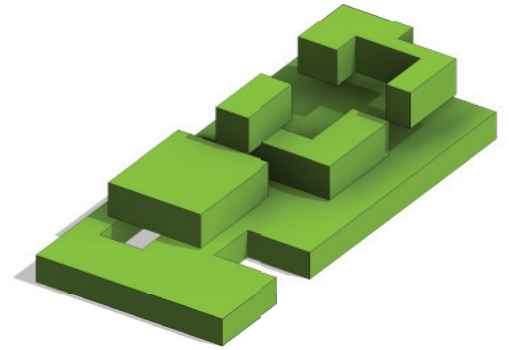
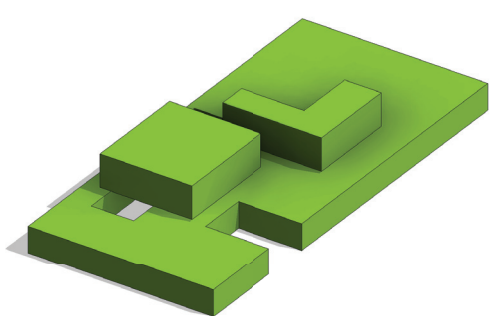
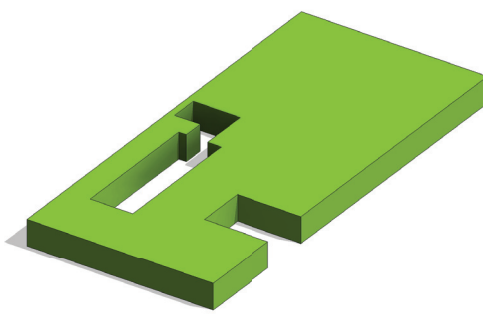
FIRST FLOOR

SECOND FLOOR

FORTH FLOOR

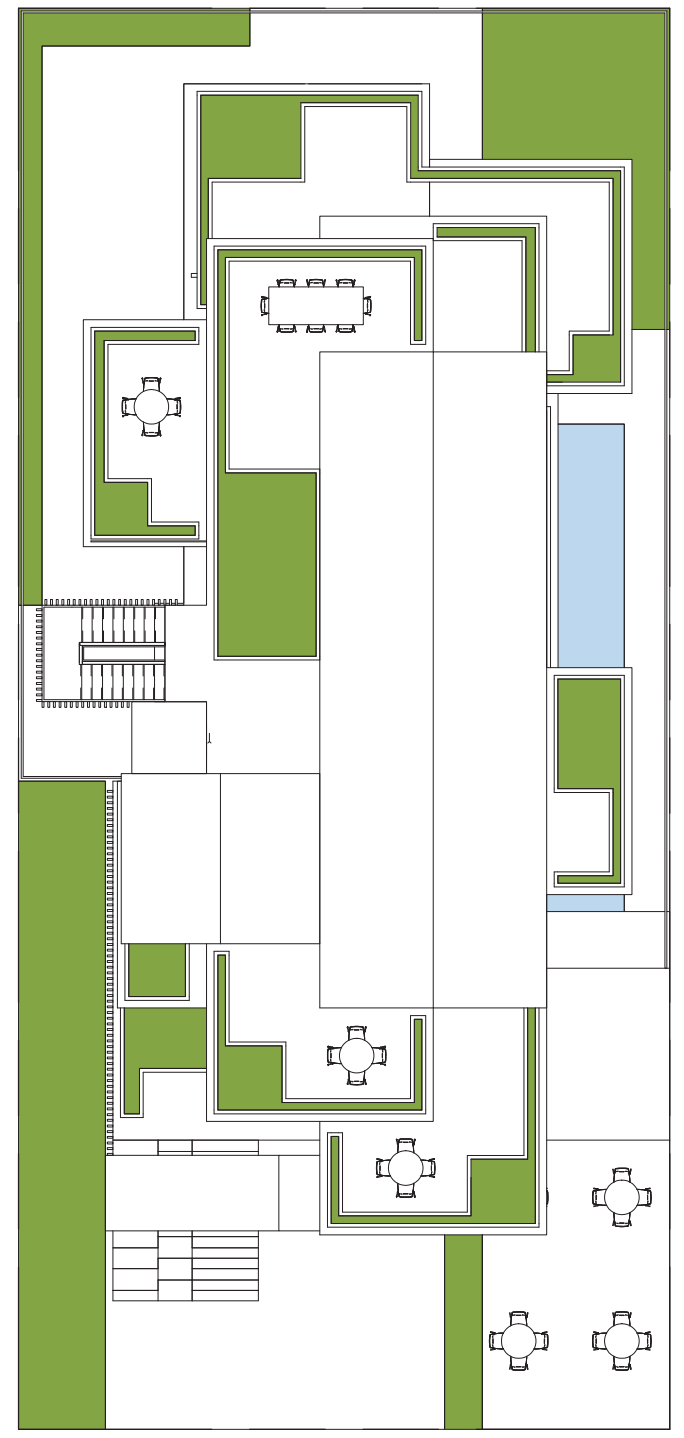
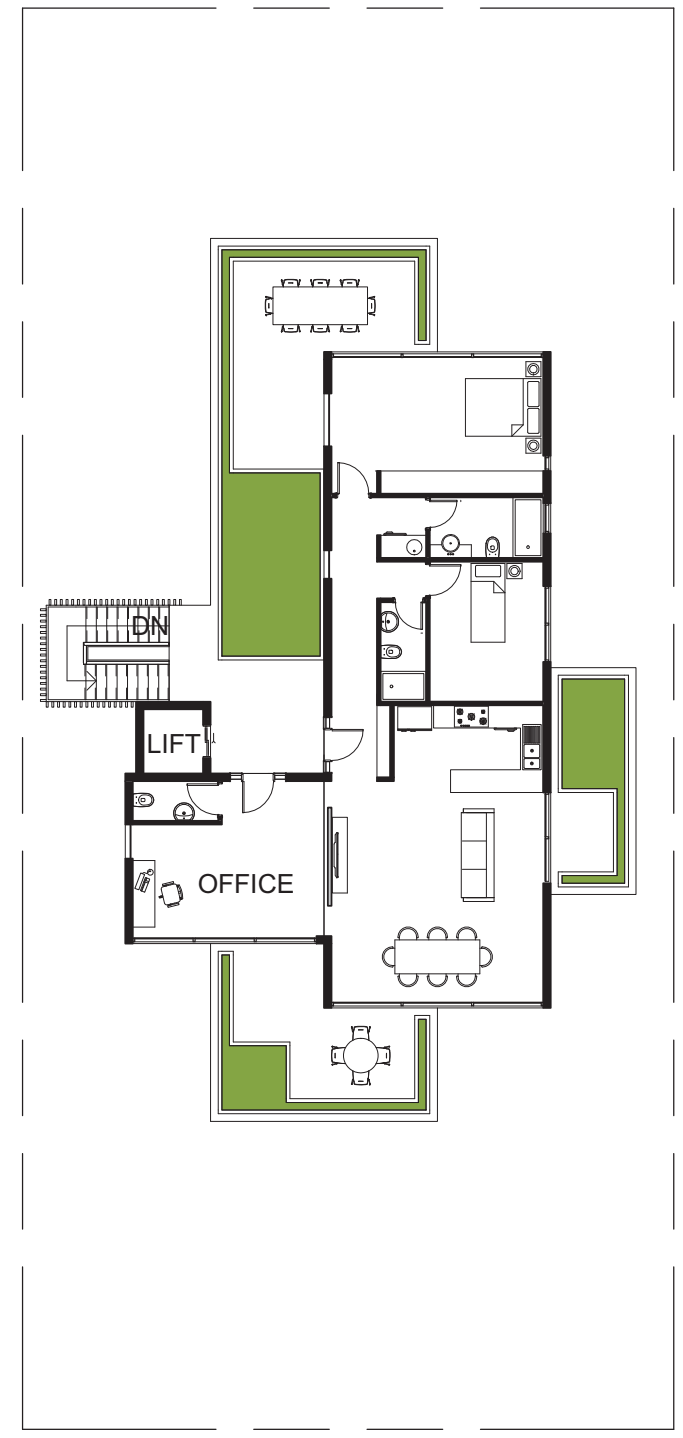
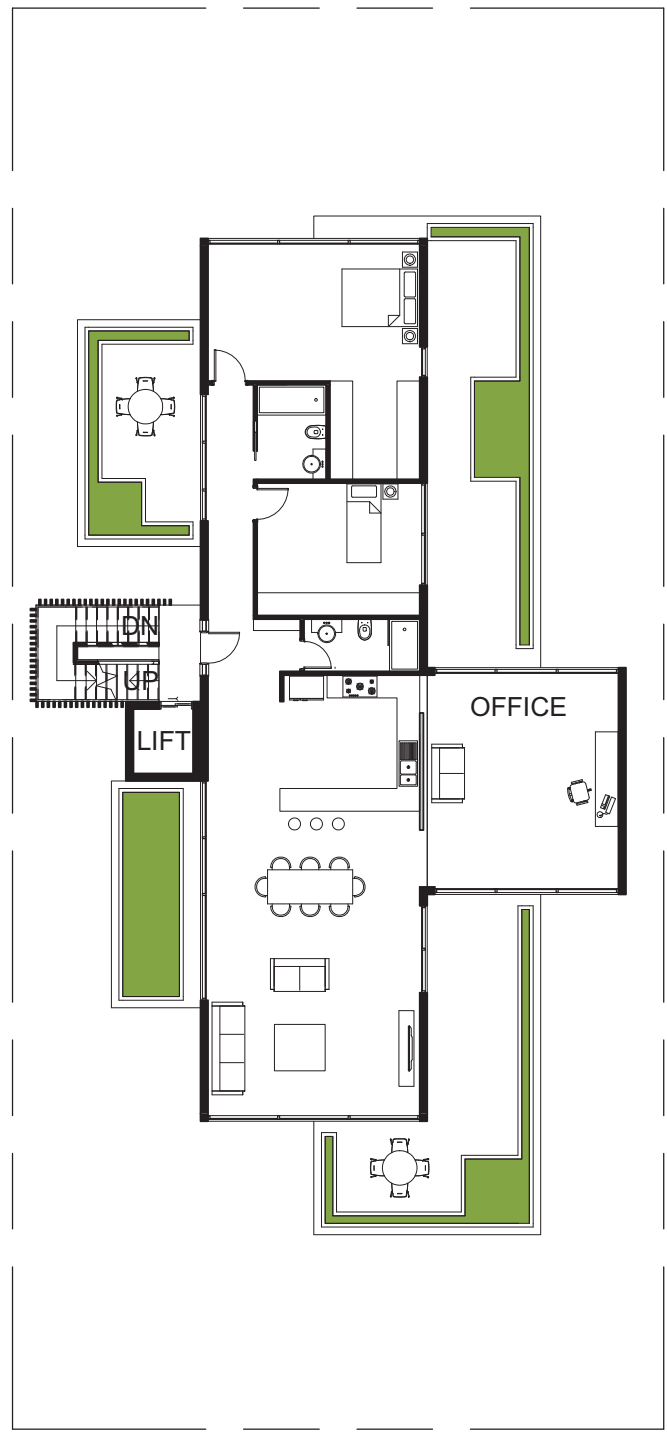
FIFTH FLOOR

Empty area
Public area
Unit yards
Unit balcony



In one hand as a result of modern lifestyle most of the people tend to live in high rise building and be more involve in active part of the city, on the other hand they still love to have their own garden, their own private yard and the most important they don't want miss their connection to sky. Designing and shaping the empty space as an positive space was a critical part of this building .

The familiar shape of pitched roof house as an home, has been used in this design so people feel more they live in their own house also it gives more chance to sit next to other houses without disturbing the view of that street.



DENSITY AND DIVERSITY DONE WELL



**DENSITY
AND
DIVERSITY
DONE WELL**